



gridmagic art projects

modify imported image

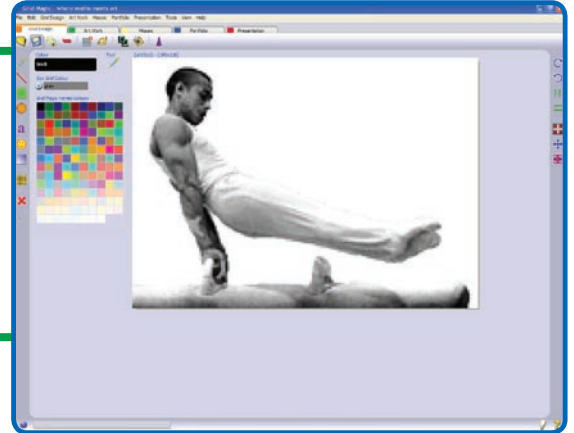
2e

GRID DESIGN

1. Import your image into **Grid Design**.



2. Send it to **Artwork**.

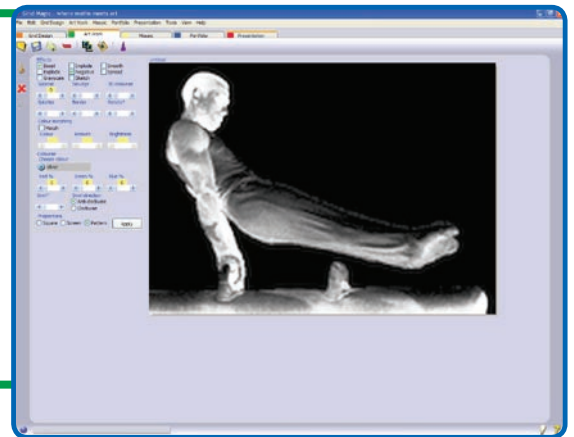


ARTWORK

3. Modify the colours of your image. What effects work well will depend on the original colours of your image. We used 'boost' and 'negative'. Don't use effects that distort the image shapes, such as swirl and implode.



4. Send your modified image to **Mosaic**.



MOSAIC



5. Create some child tiles by dragging the parent tile onto the mosaic grid. Resize and reflect these to create an interesting effect.



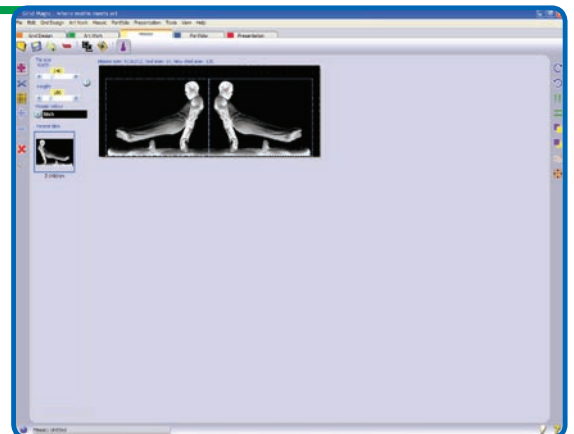
6. Crop your design to remove excess mosaic grid.



7. Resize the mosaic grid and move your image so as to create a border all the way around the edge.



8. Send your artwork to **Presentation**.



PRESENTATION

9. Add the finishing touches to your artwork.





Art Project: **Modify imported image**
Level: **Intermediate**

Maths skills:

- Proportional enlargement
- Aspect ratio
- Reflection

ICT skills:

- Copy & paste
- Import image
- Drag and drop

Art skills:

- Grayscale
- Black & white images
- Negative

Definition: Import: to open a file not in the native format of the current application.

Progression: Follow this activity with Level 3e 'Colour Morph images' or 3f 'Colourise images'.

Grid Size/Shape: The grid will automatically size itself to the same size as the imported image at the maximum resolution, ie, 160 cells wide and/or high.

Technical Point: If you're using an older version of gridmagic:-

- (Point 1.) You will need to turn off the grid lines in Grid Design to see your picture clearly. (Version 4.6 onwards does this automatically).
- (Point 7.) The resize grid function doesn't work the same, so only crop the artwork. (Version 4.6 onwards has this feature).

Teaching Points:-

- (Point 5). To enlarge (resize) a rectangular image in Mosaic accurately requires a manual calculation. Read the size first, then multiply both numbers by the size increase required.
- (Point 7). The 'Resize Mosaic Grid' window is resizable. Stretch it to fit your design by dragging the triangle in the bottom right hand corner. The tiles are all 'glued together' in this window, so you can move your design around and resize the mosaic grid at the same time. (Ver 4.6 onwards only).

